

August 2019

# EB COMMUNITY GARDEN NEWSLETTER

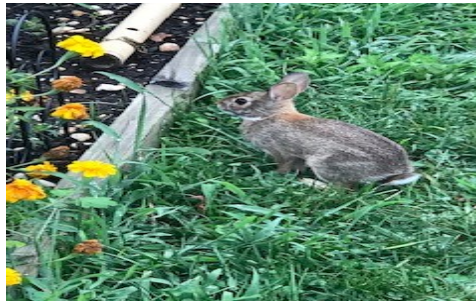


Welcome to our  
community garden  
newsletter

The purpose of this newsletter is to provide garden members with few tips, suggestions and couple of pictures from the garden plots.

## Safety and Security tips:

Keep the garden door closed after entering or exiting.



We do not want bunny's to get it. While they are cute, they enjoy going from plot to plot having bites of Tomatoes and other Vegetables being grown.

### Garden Hoses

When done with watering your plot, please shut the hose at the nozzle and wrap it neatly at the reel. Several times, it has been noted that the hose is not shut at the nozzle, leading to water being sprayed on the next person using it.

### Be respectful of your neighbors plot

Avoid walking into a plot next to you and damaging plants. Also, do NOT pick vegetables from someone else's plots.

### Tools

Please put tools back in the shed after using them and not in your plot.

### General Safety

Do not leave buckets/pots/pans in your lot facing up. This results in water collecting in them, which leads to foul smell and breeding of insects, such as Mosquitos.

**We are in urgent need of VOLUNTEERS to mow and OR trim the walkways. If interested, please send a e mail to the E B Garden website and a board member will get back to you.**

## Tips for growing Bottle Gourd—Kissan Central



1. The plant can be grown both in ground and in container with 50 cm diameter.
2. Spread the vine over the fence or trellis or roof.
3. Soak the seeds overnight in water before sowing for early germination.
4. They grow well in plenty of water but intolerant to water logging so the soil must be well drained.
5. To have more flowers and fruits, cut off the growing tip of the main vine after it grows about six feet this will encourage the plant to produce more side branches.
6. Feed the plant with liquid fertilizer every third week.
7. Feed the plant with fertilizer high in phosphorous and potassium, the plants starts to produce more flowers.
8. The plant grows up to 15 feet and climbs by tendrils, provide bamboo support or wire mesh or trellis along the stem.
9. When bees are not around at flowering stage, better pollinate flowers by hands.
10. To attract bees for pollination spray the plant with sugar water.

Pictures from the garden

